



Final Online
Outcomes Summary
Data from 1/6/23 – 1/6/24
Grant #IMERFP_2022_00005613

Focus on SSc-ILD

A Multidisciplinary
Approach to Early Diagnosis,
Management and Patient
Centered Communication



Table of Contents

Final Outcomes Summary



- Executive Summary (Slide 3)
- Evidence of Disclosure (Slide 4)
- Program Features (Slide 5)
- Audience Generation (Slide 6)
- Educational Impact Summary (Slide 7)
- Level 1 Outcomes: Participation (Slides 8-9)
- Level 2 Outcomes: Satisfaction (Slide 10)
- Level 3&4 Outcomes (objective): Knowledge and Competence (Slide 11-14)
 - Knowledge Gain by Learning Objective (Slide 11)
 - Knowledge Gain by Question (Slides 12-14)
- Level 4 Outcomes (subjective): Competence (Slides 15-16)
- Evaluation Survey Results (Slide 17-18)
- Accreditation (Slide 19)

Executive Summary

Final Outcomes Summary



Program Overview

This was a 45-minute multimedia online activity distributed on Healio, developed in partnership with PF Warriors. The activity featured an overview of SSc-ILD diagnosis, approaches for multidisciplinary disease management, and patient-centered communication. Program elements included video discussion by key opinion leaders in SSc-ILD, patient video clips, an animation clip of the pathophysiology of ILD, and downloadable patient education resources provided by PF Warriors. All of the components highlighted the importance of the multidisciplinary and interdisciplinary team's inclusion in the care of the SSc-ILD patient for improved patient care.

Online Enduring Dates:

January 6, 2023 – January 6, 2024

Activity Link:

<https://cme.healio.com/pulmonology/20221213/focus-on-ssc-ild/overview>

Program Faculty



Isabelle Amigues, MD, MS, RhMSUS
Assistant Professor
Department of Medicine
Division of Rheumatology
National Jewish Health
Denver, CO

Joshua Solomon, MD
Director, Interstitial Lung Disease Program
Associate Professor
Department of Medicine
Division of Pulmonary, Critical Care & Sleep Medicine
Section of Critical Care Medicine
National Jewish Health
Denver, CO

Katherine Rosen, RN, MSN, ANP-C
Nurse Practitioner
Division of Pulmonary, Critical Care & Sleep Medicine
Department of Medicine
National Jewish Health
Denver, CO

Learning Objectives

1. Identify the clinical, pulmonary function, and radiographic features of early SSc-ILD and their prognostic significance.
2. Implement strategies for the multidisciplinary approach for the diagnosis and management of SSc-ILD.
3. Use effective HCP communication strategies to improve healthcare provider and patient engagement

Target Audience & Accreditation

Primary target audience: Pulmonologists, Rheumatologists, Radiologists, and Pathologists, as well as Nurse Practitioners and Physician Assistants who treat patients with ILD and related diseases.

National Jewish Health designates this enduring material for a maximum of 0.75 *AMA PRA Category 1 Credit*™.

Online Enduring: Evidence of Disclosure

Final Outcomes Summary

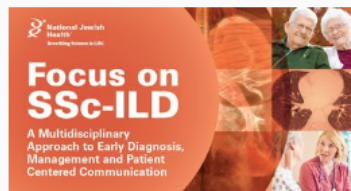


Focus on SSc-ILD: A Multidisciplinary Approach to Early Diagnosis, Management and Patient Centered Communication

This activity is supported by an independent educational grant from Boehringer Ingelheim Pharmaceuticals, Inc.

0.75 CME	45 MINS	\$0 FEE	SAVE
-------------	------------	------------	----------

START ACTIVITY



Overview

Activity Release Date: January 6, 2023

Activity Expiration Date: January 6, 2024

Estimated Time to Complete Activity: 45 minutes

Conflicts of Interest Disclosure Policy

In accordance with the Accreditation Council for Continuing Medical Education (ACCME), National Jewish Health requires that all program faculty, content developers, reviewers, and others in a position to control the content of this activity disclose to learners the presence or absence of any relevant financial relationships with an ACCME-defined ineligible company within the preceding 24 months of the activity. The ACCME defines an "ineligible company" as one whose primary business is producing, marketing, selling, re-selling, or distributing healthcare products used by or on patients.

Our goal is to ensure that there is no compromise in the ethical relationship that exists between those in a position to control the content of the activity and those participating in the activity and their respective professional duties. All accredited education activities offered by National Jewish Health are reviewed to ensure a balanced and evidence-based presentation.

All relevant financial relationships among individuals in a position to control the content of this activity have been identified and mitigated according to the Standards of Integrity and Independence in Accredited Continuing Education.

Faculty reports the following relationship(s)

Isabelle Amigues, MD, MS, RhMSUS has no relevant financial relationships to disclose.

Katherine Rosen, RN, MSN, ANP-C has no relevant financial relationships to disclose.

Joshua Solomon, MD has no relevant financial relationships to disclose.

Planners and reviewers report the following relationship(s)

Liudmila Kastsianok, MD, RhMSUS has no relevant financial relationships to disclose.

Zulma Yunt, MD discloses she is a speaker for Boehringer Ingelheim.

Elyce Bowron, MEd has no relevant financial relationships to disclose.

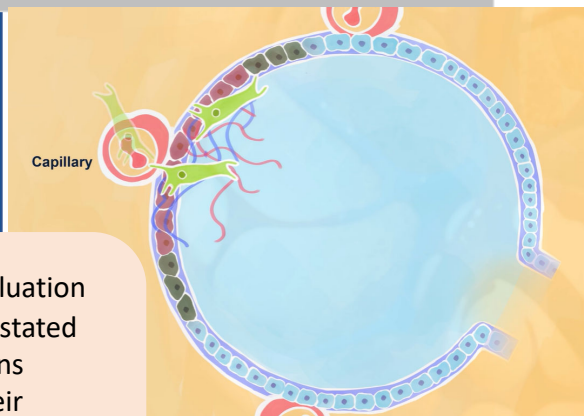
Meghan Brenner, MA has no relevant financial relationships to disclose.

Program Features

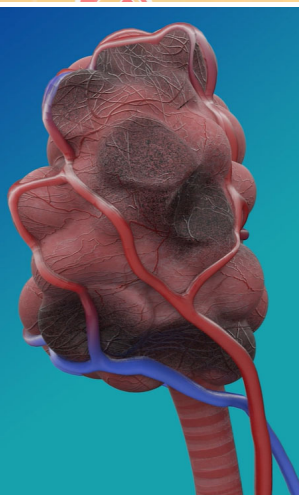
Final Outcomes Summary



2D/3D Whiteboard Animations



97% of evaluation respondents stated the animations increased their understanding of ILD pathophysiology (N=304)



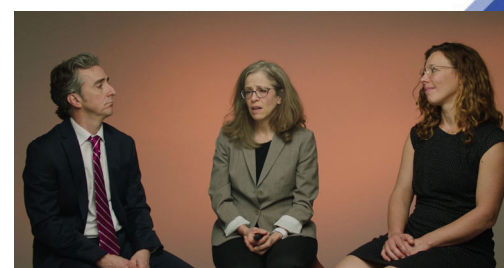
FIBROSIS

Patient Testimonial

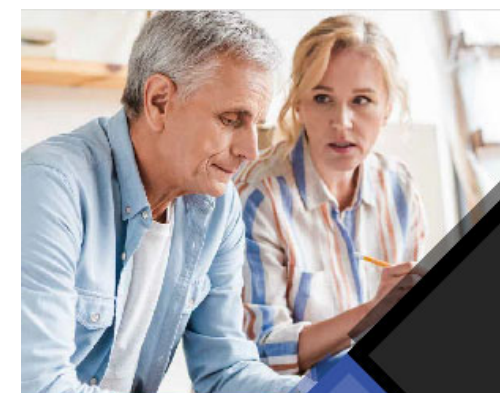


96% of evaluation respondents stated the patient testimonial improved their understanding of the patient experience of this disease (N=304)

Multidisciplinary Faculty Panel



Downloadable Patient Resources



Patients Guide
To Living with
Pulmonary Fibrosis

88% of evaluation respondents are likely to use the patient education resources in practice (N=302)

Audience Generation

Final Outcomes Summary

Personalized targeting tools across numerous tactics reach HCPs by leveraging demographic data (such as location, profession, specialty) and behavioral data (such as learner participation history, areas of interest).

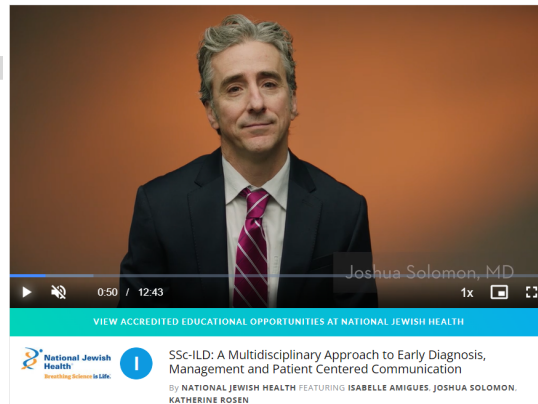
Emails to NJH database
and paid lists



Dedicated landing page
on NJH website



Social media
ads and posts



Promo video on
VuMedi

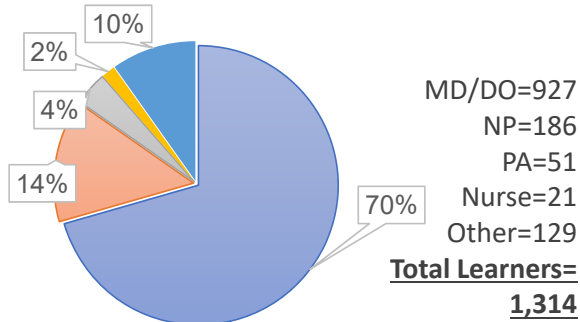


Educational Summary Impact

Final Outcomes Summary



Participation



■ MD/DO ■ NP ■ PA ■ Nurse ■ Other

88% of learners were physicians and advanced practice providers

	Guarantee	Actual to Date
Learners: <i>users who are logged in who land on overview page</i>	1,200	1,314
OR		
Test takers: <i>learner who answered at least one post-test question</i>	375	482

Learning Gain Across Objectives

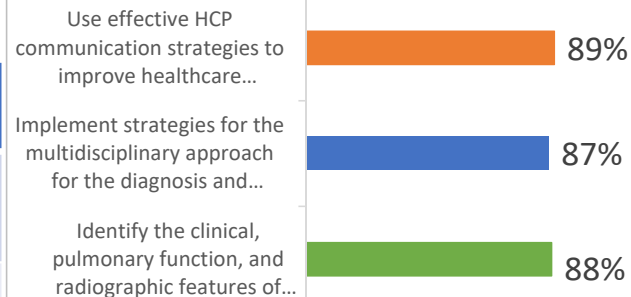
Overall Knowledge Gain 82%

66%

**24% relative gain in knowledge
16% absolute gain in knowledge**

■ Pre-test (AVG N=477) ■ Post-test (AVG N=331)

Post Program Confidence



N=303

Evaluation N=306

Met their educational needs **(98%)**



Reinforced or improved current skills **(97%)**



Provided tools and strategies to apply in practice **(97%)**

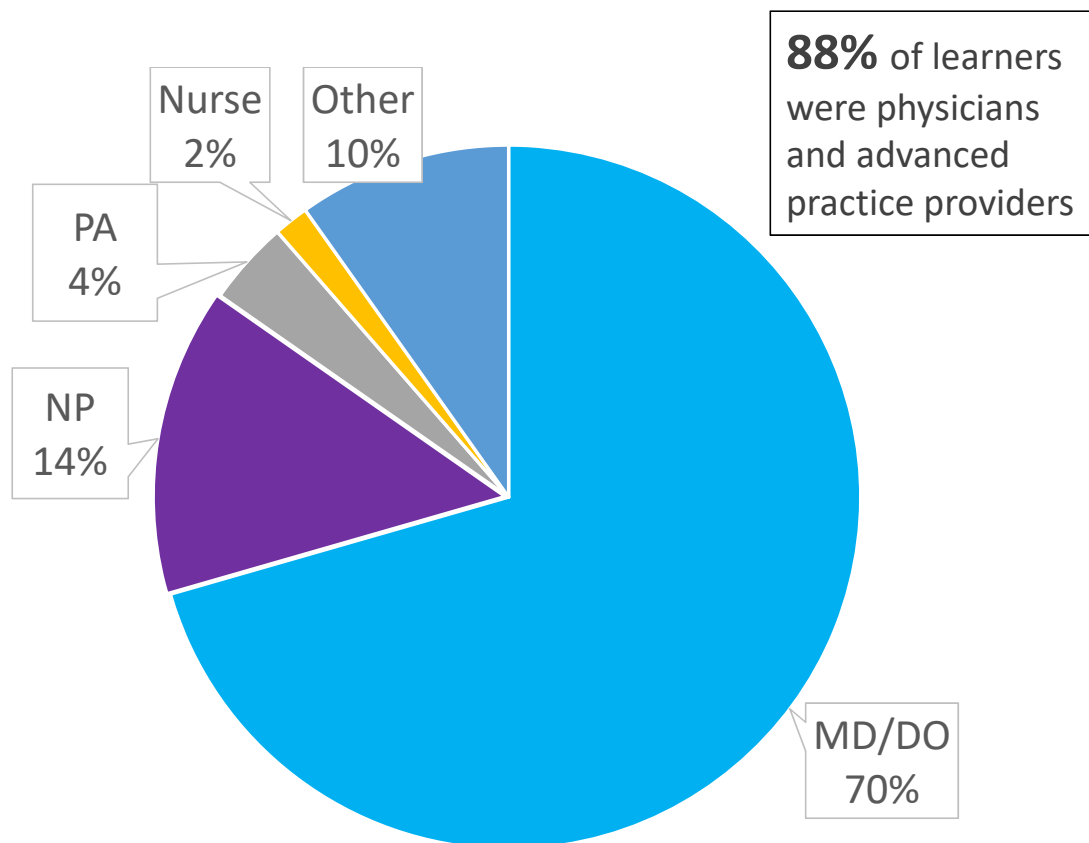
94%

N=272

Evaluation respondents intend to make changes to practice as a result of the activity

Level (1) Outcomes: Participation (Degree)

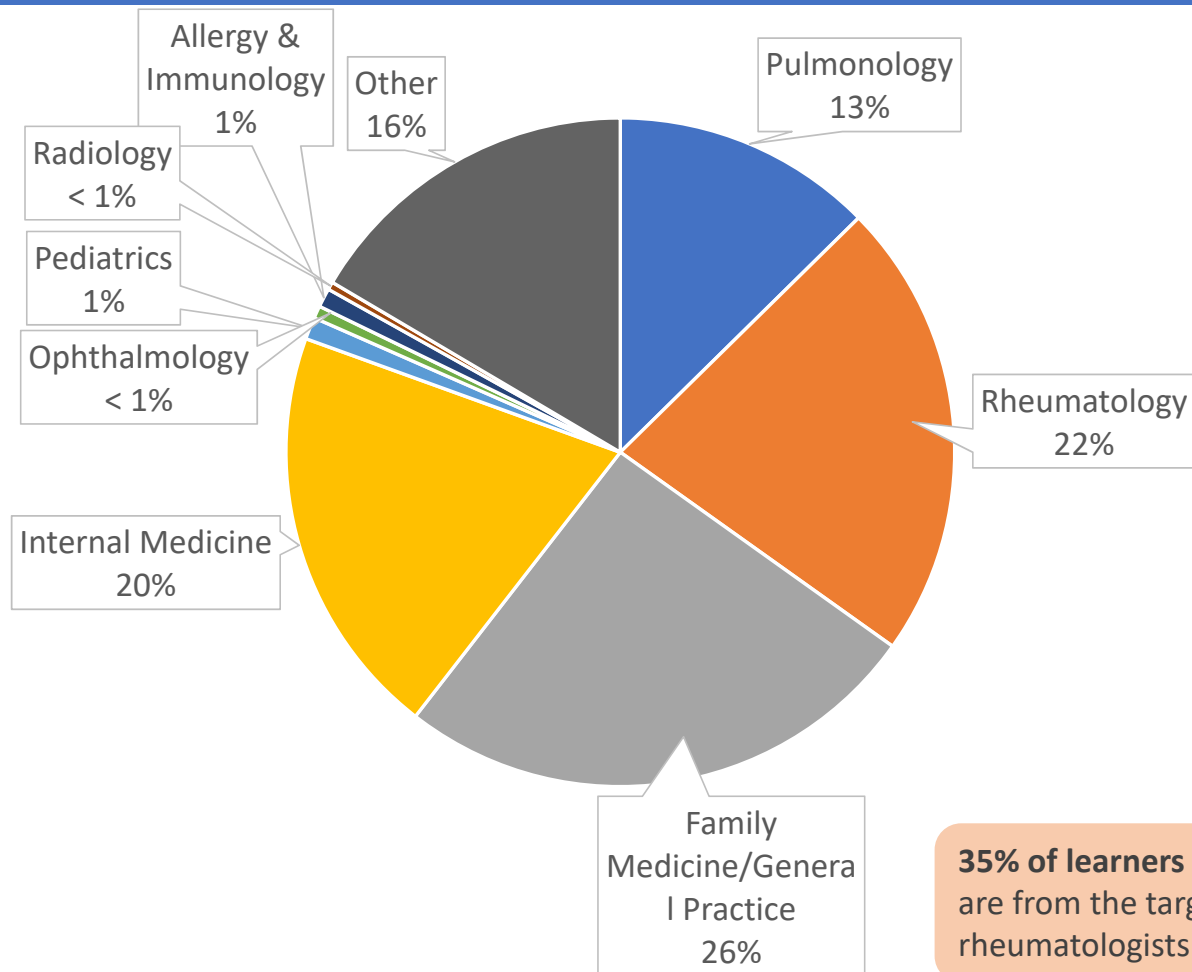
Final Outcomes Summary



Degree	Total
MD/DO	927
NP	186
PA	51
Nurse	21
Other	129
Total Completers	1,314

Level (1) Outcomes: Participation (Specialty)

Final Outcomes Summary



Specialty	Total
Rheumatology	292
Pulmonology	166
Family medicine/general practice	337
Internal medicine	263
Pediatrics	14
Allergy/Immunology	12
Ophthalmology	8
Radiology	5
Other	217
Total Learners	1,314

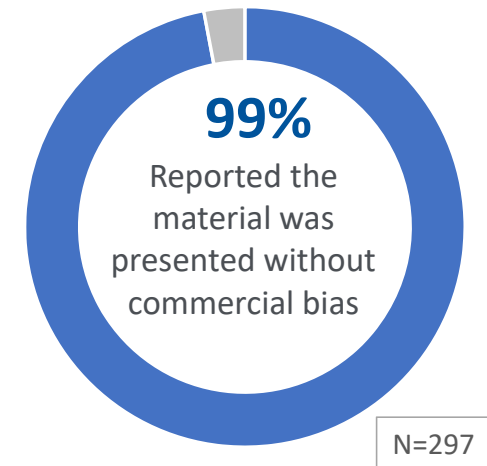
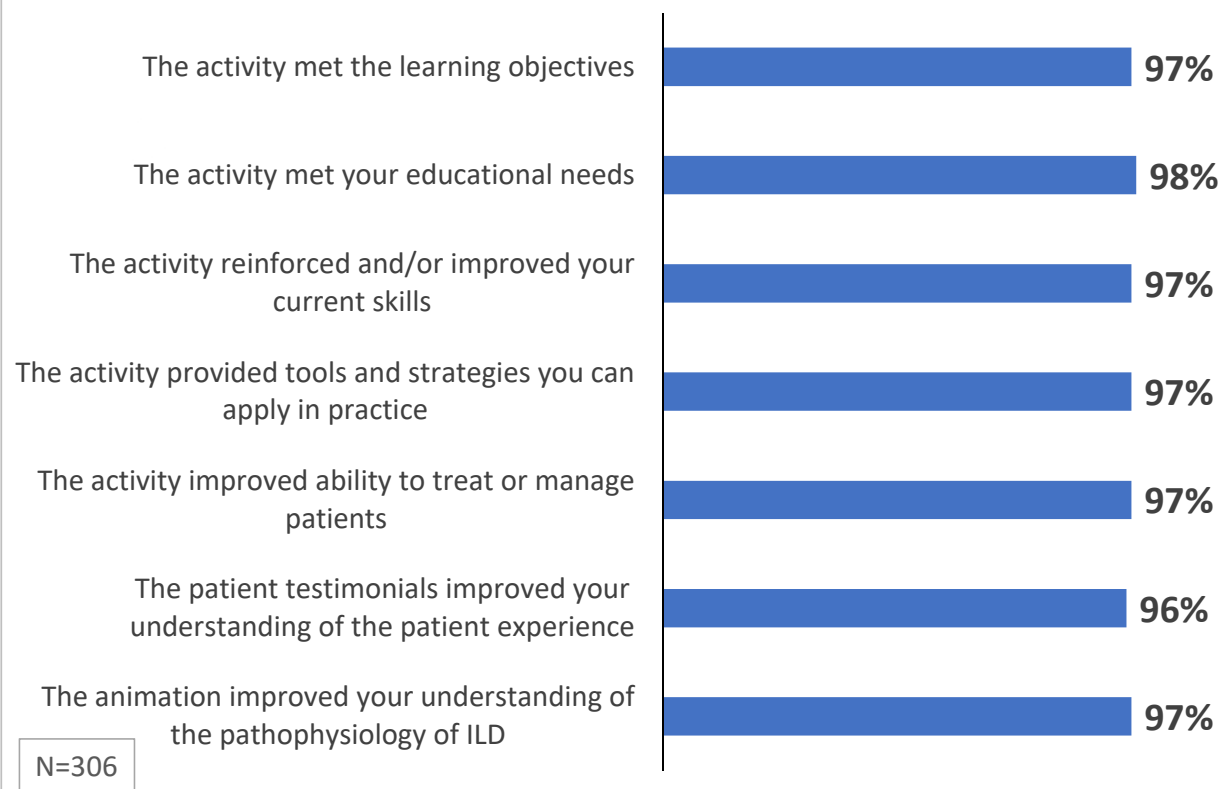
35% of learners (N=1,314) and 50% of test takers (N=482) are from the target audience of pulmonologists, rheumatologists and radiologists.

Level (2) Outcomes: Satisfaction

Final Outcomes Summary



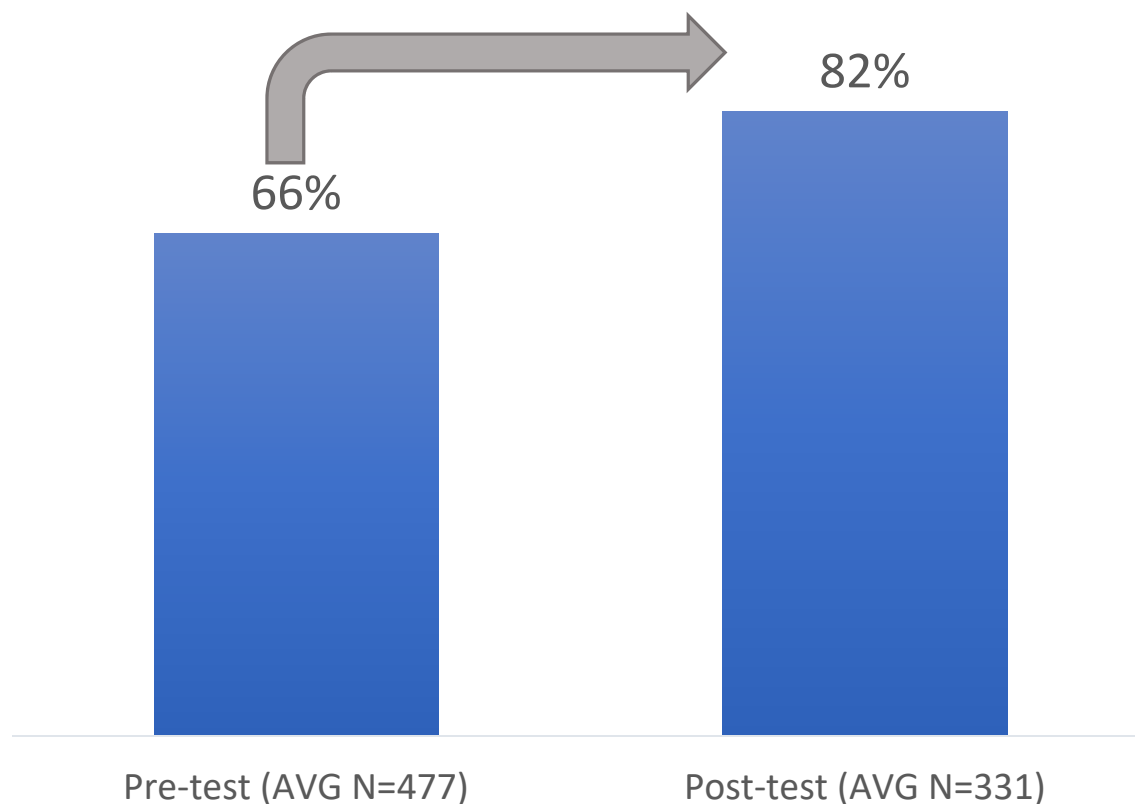
Evaluation respondents reported the following areas of the activity were “Excellent” or “Good.”
How well did...



Level (3 & 4) Outcomes: Knowledge & Competence

Final Outcomes Summary

Overall Knowledge Gain across Learning Objectives



24% Overall Relative Knowledge Gain



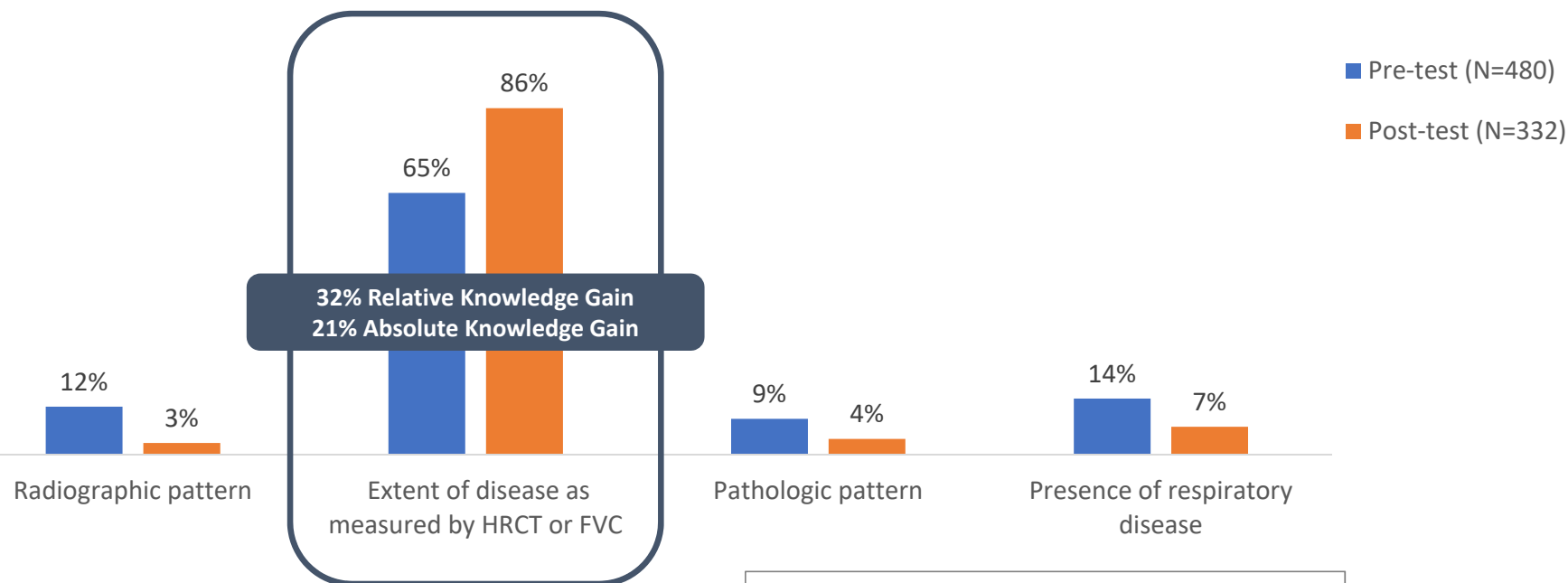
16% Overall Absolute Knowledge Gain

Level (3 & 4) Outcomes: Knowledge & Competence

Final Outcomes Summary

Learning Objective: Identify the clinical, pulmonary function, and radiographic features of early SSc-ILD and their prognostic significance.

Question 1: Which of the following characteristics of SSc-ILD predict prognosis?



* Unmatched learner samples (31% attrition from pre to post)

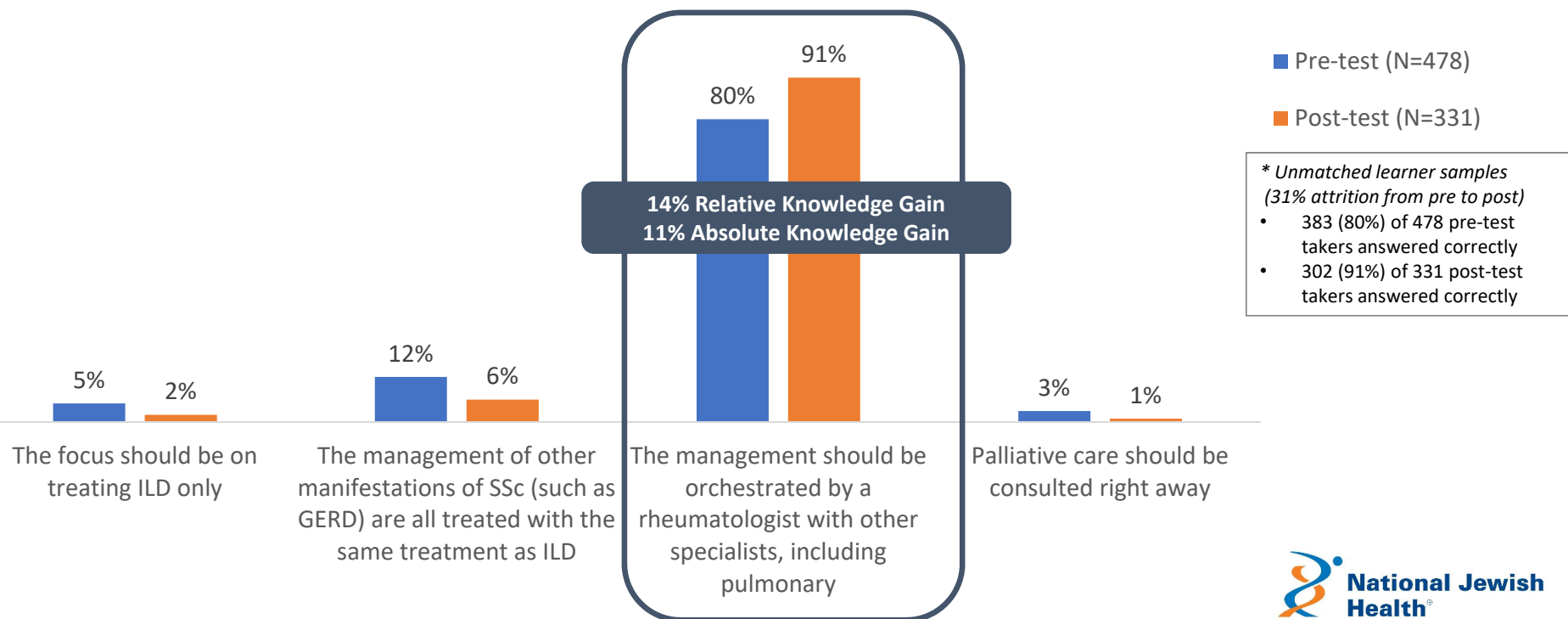
- 310 (65%) of 480 pre-test takers answered correctly
- 286 (86%) of 332 post-test takers answered correctly

Level (3 & 4) Outcomes: Knowledge & Competence

Final Outcomes Summary

Learning Objective: Implement strategies for the multidisciplinary approach for the diagnosis and management of SSc ILD.

Question 2: Once a patient with SSc has been diagnosed with ILD:

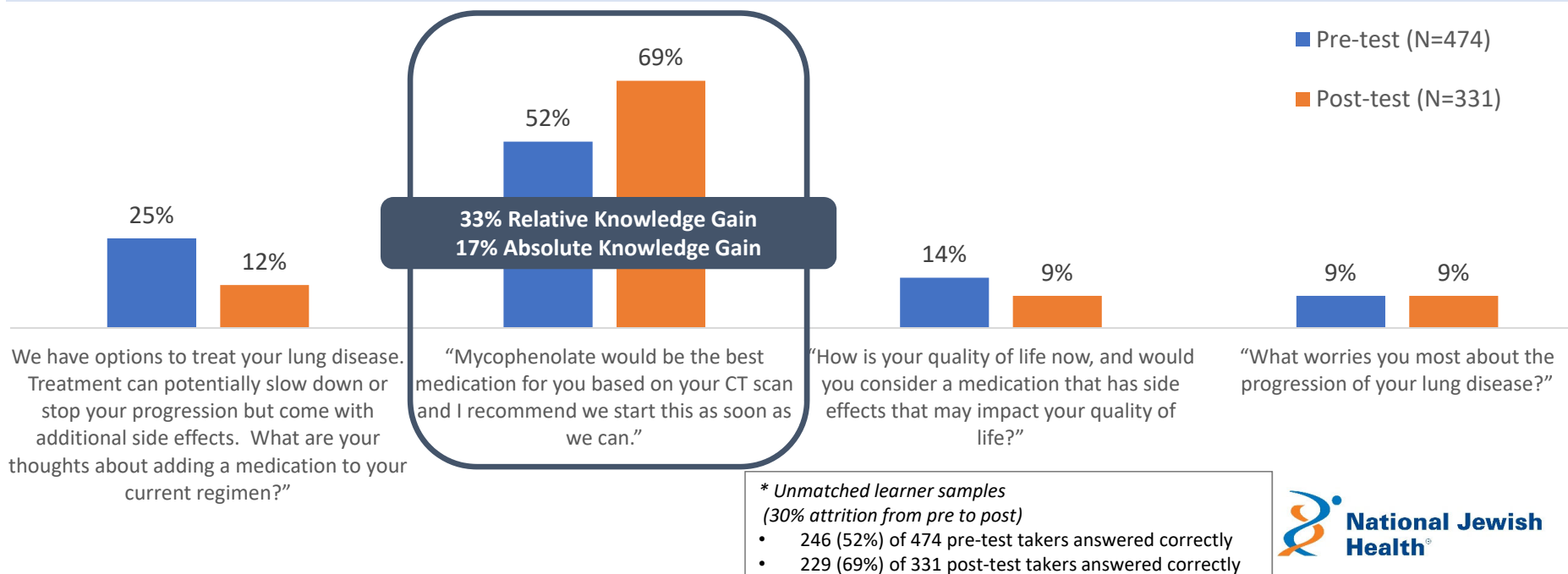


Level (3 & 4) Outcomes: Knowledge & Competence

Final Outcomes Summary

Learning Objective: Use effective HCP communication strategies to improve healthcare provider and patient engagement.

Question 3: You are seeing a new patient with a diagnosis of scleroderma- associated ILD. Her lung function has declined over the last six months and she is more breathless. Chest imaging shows worsening in her interstitial lung disease. You decide to have a discussion about treatment options with her and her husband. Which of the following below is NOT an example of patient-centered communication?

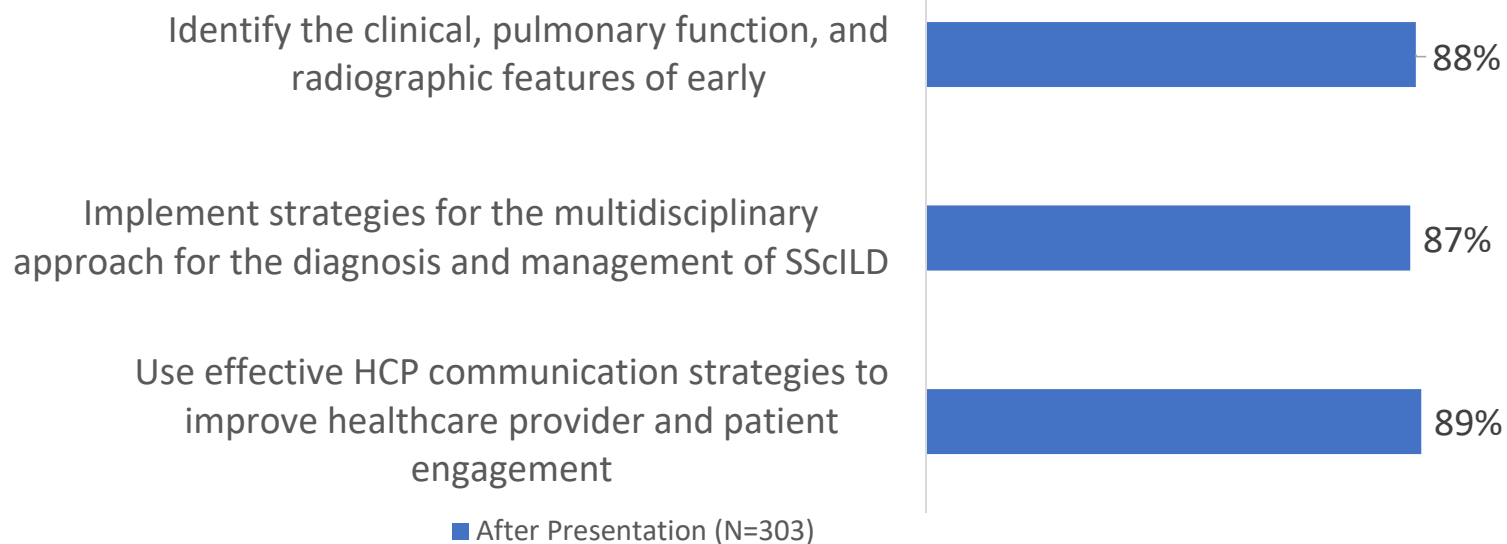


Level (4) Outcomes: Competence

Final Outcomes Summary



Evaluation respondents reported their confidence as it relates to the learning objectives after the activity
(Very confident or confident)



Level (4) Outcomes: Competence

Final Outcomes Summary



What is the top change will you incorporate in your practice?

Improve identification and diagnosis of SSc-ILD
(21 responses)

Provide more resources for patient education and support
(8 responses)

Improve communication with other providers for multidisciplinary care of SSc-ILD
(13 responses)

Order new tests and imaging as part of clinical assessment of SSc-ILD
(18 responses)

Improve patient communication and shared decision making
(18 responses)

Improve treatment selection for SSc-ILD
(12 responses)

Improve longitudinal management of SSc-ILD
(5 responses)

N=95

94%

N=272

Evaluation respondents intend to make changes in practice as a result of the activity

Evaluation Survey Results

Final Outcomes Summary



What barriers will the activity help to address?

- Lack of access to research studies
- Access to care
- Patient communication
- Patient frustration and adherence
- Implementing shared decision making
- Ability to integrate various specialties into care
- Education and resources for improving quality of life

81%

N=298

Evaluation
respondents report
the activity addressed
barriers to optimal
patient care

Evaluation Survey Results

Final Outcomes Summary



Key Takeaways

- Early ILD diagnosis
- Early recognition of lung disease
- Multidisciplinary care and the importance of a team-based approach
- New updates on SSc management
- New treatment options
- Patient communication
- Remain aggressive in evaluation and referral for treatment
- The need for aggressive monitoring
- Treatment guidelines
- Underscoring of evidence for therapeutics and diagnostics in the field
- Use imaging/spirometry
- Involvement of patient in treatment decisions



Future Topics

- Long-term impact of anti-fibrotics for prognosis
- Best treatment for Raynaud's, including injections
- Closer look at studies
- New therapies and upcoming trials
- Different types of ILD radiologically and histologically
- Role of bone marrow transplant as treatment of SSc-ILD
- More time on pathogenesis
- Overlap with Sjogren's Disease

"The PPT presentation was so informative. Very excellent!"

-Online enduring learner

Accreditation Details

Final Outcomes Summary



National Jewish Health is accredited with Commendation by the Accreditation Council for Continuing Medical Education (ACCME) to provide continuing medical education for physicians. The NJH Office of Professional Education produced and accredited this program and adhered to the updated ACCME guidelines.

National Jewish Health designates this enduring material for a maximum of 0.75 *AMA PRA Category 1 Credits™*.

