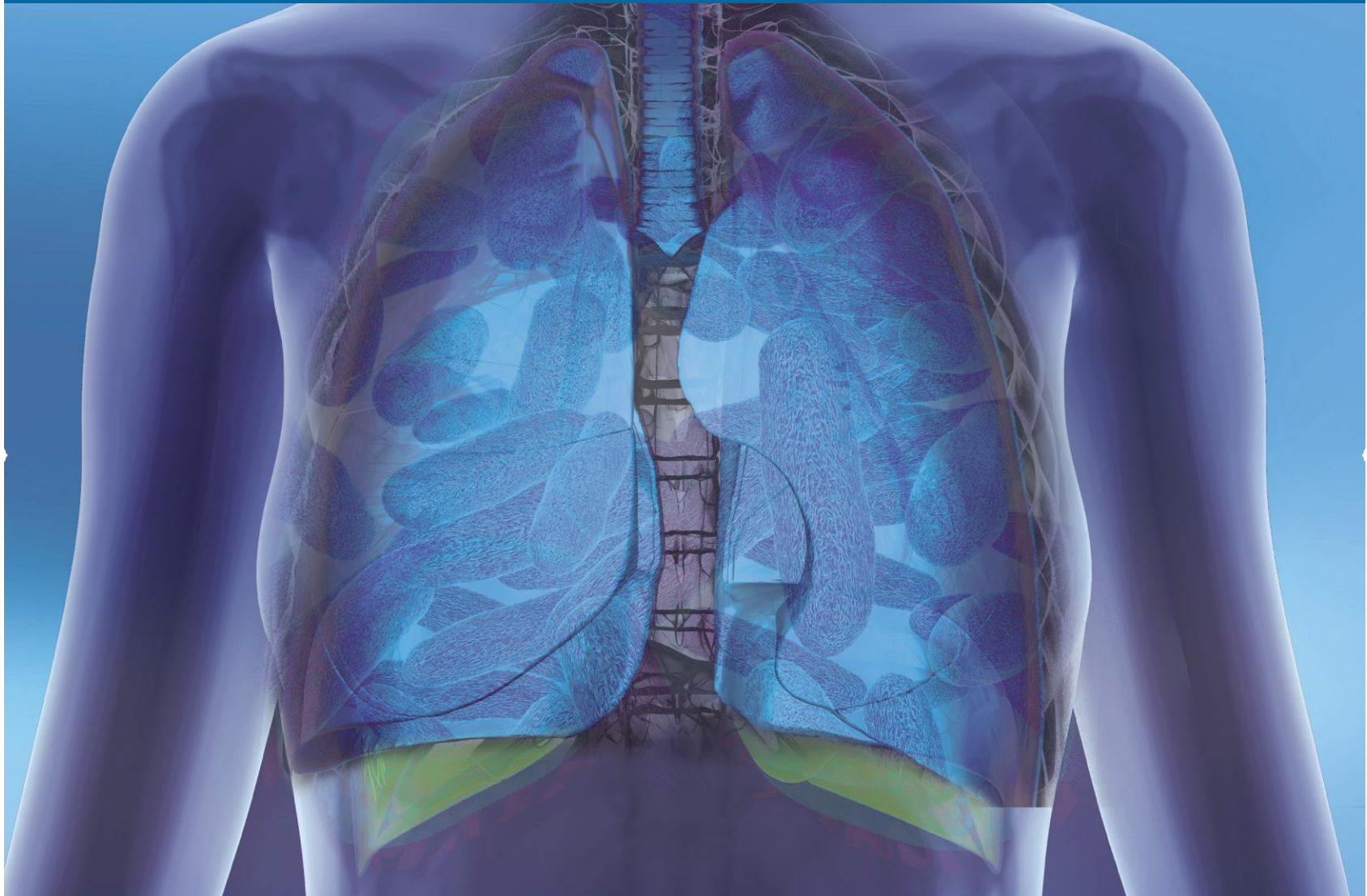


NTM Lecture Series for Providers



Supported by an educational grant from Insmed





© 2021 National Jewish Health®

**Duplication of the presentation slides without authorized
permission is prohibited.**

Supported by an Educational Grant from Insmmed.

Accreditation Statement

National Jewish Health is accredited by the Accreditation Council for Continuing Medical Education (ACCME) to provide continuing medical education for physicians.

Designation Statement

National Jewish Health designates this enduring material for a maximum of 13.0 *AMA PRA Category 1 Credits™*. Physicians should claim only the credit commensurate with the extent of their participation in the activity.

Nursing Continuing Education Accreditation Statement

Nursing Continuing Education: Provider approved by the California Board of Registered Nursing, Provider Number 12724, for 13.0 contact hours.

**National Jewish Health wishes to thank the following faculty members
for their participation in the NTM Lecture Series for Providers:**

Charles Daley, MD (Program Co-Director)

Chief, Division of Mycobacterial and Respiratory Infections
Professor of Medicine
National Jewish Health

Shannon H. Kasperbauer, MD (Program Co-Director)

Associate Professor of Medicine
Division of Mycobacterial and Respiratory Infections
National Jewish Health

Edward D. Chan, MD

Staff Physician
Pulmonary Section
Denver Veterans Affairs Medical Center
Professor of Medicine
Division of Pulmonary Sciences and Critical Care Medicine
University of Colorado Denver Anschutz Medical Campus

Keira A. Cohen, MD

Assistant Professor of Medicine
Director, The Johns Hopkins Center for Nontuberculous Mycobacteria and Bronchiectasis
John Hopkins Medicine

Jared J. Eddy, MD

Assistant Professor of Medicine
Director of Infection Prevention & Antimicrobial Stewardship
Division of Mycobacterial & Respiratory Infections
Department of Medicine

David E. Griffith, MD

Professor of Medicine
Division of Mycobacterial & Respiratory Infections
National Jewish Health

Jennifer R. Honda, PhD

Assistant Professor
Center for Genes, Environment & Health
Department of Immunology and Genomic Medicine
National Jewish Health

Gwen Huitt, MD, MS

Professor of Medicine
Division of Mycobacterial and Respiratory Infections
National Jewish Health

Reeti Khare, PhD, D(ABMM)

Director, Infectious Disease Laboratory
Advanced Diagnostic Laboratories
National Jewish Health

Tilman L. Koelsch, MD

Assistant Professor of Radiology
National Jewish Health

Amy Leitman, JD

Director of Policy & Advocacy
NTM Info & Research (NTMir)

Steven E. Lommatzsch, MD

Associate Professor of Medicine
Adult Site Co-Director, PCD Foundation
Division of Pulmonary, Critical Care & Sleep Medicine
National Jewish Health

Stacey Martiniano, MD

Associate Professor of Pediatrics
University of Colorado School of Medicine

John D. Mitchell, MD

Courtenay C. and Lucy Patten Davis Endowed Chair in Thoracic Surgery
Professor and Chief, General Thoracic Surgery
University of Colorado School of Medicine

D Rebecca Prevots, PhD, MPH

Investigator
Chief, Epidemiology and Population Studies Unit
Laboratory of Clinical Immunology and Microbiology
Division of Intramural Research
NIAID, NIH

Michael Strong, PhD

Associate Professor
Office of Academic Affairs
Center for Genes, Environment and Health
National Jewish Health

Disclosure of Conflict of Interest

In accordance with the Accreditation Council for Continuing Medical Education (ACCME), National Jewish Health requires that all program faculty, content developers, reviewers, and others in a position to control the content of this activity disclose to learners the presence or absence of any relevant financial relationships with an ACCME-defined ineligible company within the preceding 24 months of the activity. The ACCME defines an “ineligible company” as one whose primary business is producing, marketing, selling, re-selling, or distributing healthcare products used by or on patients.

Our goal is to ensure that there is no compromise in the ethical relationship that exists between those in a position to control the content of the activity and those participating in the activity and their respective professional duties. All accredited education activities offered by National Jewish Health are reviewed to ensure a balanced and evidence-based presentation.

All relevant financial relationships among individuals in a position to control the content of this activity have been identified and mitigated according to the Standards of Integrity and Independence in Accredited Continuing Education.

Faculty Disclosures

Charles Daley, MD (Program Co-Director) discloses he is on an advisory board for Insmed, Paratek, Spero, AN2 Therapeutics, and Matinas. He is also an investigator for Insmed and BugWorks.

Shannon H. Kasperbauer, MD (Program Co-Director) discloses she is a speaker for Paratek and on an advisory board for Insmed and AN2 Therapeutics.

Edward D. Chan, MD has no relevant financial relationships to disclose.

Keira Cohen, MD discloses she is on an advisory board for Insmed and HillRom, Inc. and a consultant for Microbion.

Jared Eddy, MD has no relevant financial relationships to disclose.

David Griffith, MD discloses he is a consultant for Insmed, AN2 Therapeutics and Spero.

Jennifer R. Honda, PhD has no relevant financial relationships to disclose.

Gwen Huitt, MD discloses she is a speaker for Insmed.

Reeti Khare, PhD has no relevant financial relationships to disclose.

Tilman L. Koelsch, MD has no relevant financial relationships to disclose.

Amy Leitman, JD has no relevant financial relationships to disclose.

Steven Lommatzsch, MD discloses he is an investigator for Insmed.

Stacey Martiniano, MD discloses she is on a data safety monitoring board for Beyond Air.

John Mitchell, MD discloses he is a consultant for Intuitive Surgical, Inc.

Rebecca Prevots, PhD has no relevant financial relationships to disclose.

Michael Strong, PhD has no relevant financial relationships to disclose

Planner/Reviewer Disclosures

Meghan Brenner, MA has no relevant financial relationships to disclose.

Edward D. Chan, MD has no relevant financial relationships to disclose.

Charles Daley, MD (Program Co-Director) discloses he is on an advisory board for Insmed, Paratek, Spero, AN2 Therapeutics, and Matinas. He is also an investigator for Insmed and BugWorks.

Andrea Harshman, MHA, CHCP, CMP-HC has no relevant financial relationships to disclose. **Jennifer**

R. Honda, PhD has no relevant financial relationships to disclose.

Shannon H. Kasperbauer, MD (Program Co-Director) discloses she is a speaker for Paratek and on an advisory board for Insmed and AN2 Therapeutics.

Reeti Khare, PhD has no relevant financial relationships to disclose.

Ann Mullen, RN, CNS, CDE, AE-C has no relevant financial relationships to disclose.

Harold Nelson, MD discloses he is a consultant for ALK and on a data safety monitoring board for AstraZeneca.

Lauren Rieck, MBA has no relevant financial relationships to disclose.

Nicholas Walter, MD has no relevant financial relationships to disclose.

Disclosure of Unlabeled Use

The faculty of this educational activity may include discussions of products or devices that are not currently labeled for use by the FDA. Faculty members have been advised to disclose to the audience any reference to an unlabeled or investigational use.

No endorsement of unapproved products or uses is made or implied by coverage of these products or uses.

Please refer to the official prescribing information for each product for discussion of approved indicators, contraindications and warnings.

Disclaimer

National Jewish Health ("NJH") and its officers, Board of Directors, faculty, employees, representatives, and other agents (collectively, "NJH Parties") shall not be responsible in any capacity for, and do not warrant any content whatsoever, in any NJH publication or other product (in any medium), or the use or reliance on any such content, and expressly disclaim any and all liability for such content. All such responsibility for content and use of product solely rests with the authors or the advertisers, as the case may be.

By way of example, without limiting the foregoing, this disclaimer of liability applies to the accuracy, completeness, effectiveness, quality, appearance, ideas, or products, as the case may be, of or resulting from, any statements, references, articles, positions, claimed diagnosis, claimed possible treatments, services, or advertising, express or implied, contained in any NJH live meeting, publication, online course or other product.

Furthermore, the content should not be considered medical advice and is not intended to replace consultation with a qualified medical professional. Under no circumstances, including negligence, shall any of the NJH Parties be liable for any DIRECT, INDIRECT, INCIDENTAL, SPECIAL or CONSEQUENTIAL DAMAGES, or LOST PROFITS that result from any of the foregoing, regardless of legal theory and whether or not claimant was advised of the possibility of such damages.

NTM Lecture Series for Providers

Faculty Biographies

Ed Chan, MD was born in Rangoon, Burma and he immigrated to the United States in 1967. He is a physician at the Denver VA Medical Center and National Jewish Health. He went to medical school and did his medical residency in NYC. He completed his pulmonary and critical care fellowship in Colorado. His clinical and research interests are in tuberculosis, NTM lung disease, and critical care medicine.

Keira Cohen, MD is an Assistant Professor of Medicine in the Division of Pulmonary and Critical Care and the founding director of the Center for Nontuberculous Mycobacteria and Bronchiectasis at the Johns Hopkins School of Medicine in Baltimore, Maryland. Dr. Cohen received her medical degree from the University of Pennsylvania School of Medicine, where she was inducted into the Alpha Omega Alpha medical honor society. She completed internal medicine residency and pulmonary and critical care fellowship at the Brigham and Women's Hospital, Harvard Medical School in Boston, Massachusetts. Dr. Cohen received additional post-doctoral training with the pathogen genomics group at the Broad Institute of Harvard and MIT in Cambridge, Massachusetts, and the KwaZulu-Natal Research Institute for TB and HIV (K-RITH) in Durban, South Africa. At Johns Hopkins, she founded the Johns Hopkins Center for Nontuberculous Mycobacteria and Bronchiectasis, which is a multidisciplinary program dedicated providing high quality care and advancing research for individuals with these two related lung diseases. A physician scientist, her research efforts are devoted to improving diagnosis and treatment of NTM lung disease.

Charles Daley, MD (Program Co-Director) is Professor of Medicine at National Jewish Health (NJH) and the University of Colorado Denver. He is Chief of the Division of Mycobacterial and Respiratory Infections and Director of the Nontuberculous Mycobacteria (NTM) Center of Excellence at NJH. Dr. Daley is past-Chair of the Steering Committee for the National Bronchiectasis and Nontuberculous Mycobacteria Research Registries, which are supported by the COPD Foundation. He is Chair of the ATS NTM Guidelines revision committee and serves on the guideline committees for the diagnosis of TB, treatment of TB and treatment of MDR-TB for both the ATS and WHO. Dr. Daley has been recognized as one of the "Best Doctors in America" by U.S. News & World Report and Castle Connolly and he recently received the World Lung Health Award given by the ATS. His academic interests include global health policy and clinical and translational research in tuberculosis and NTM.

Jared J. Eddy, MD received his medical degree at Johns Hopkins University School of Medicine. He completed his residency in internal medicine and fellowship in infectious diseases at Boston Medical Center where he also completed a research fellowship concentrating on tuberculosis. He also has master's degrees in epidemiology from the Boston University School of Public Health, and in classics from the University of Cambridge (UK) where he studied infectious diseases in ancient Rome. As an assistant professor of medicine in the Division of Mycobacterial and Respiratory Infections at National Jewish Health (NJH) he primarily treats patients with mycobacterial disease but also other infections. Additionally, he is director of infection prevention and control at NJH and St. Joseph's Hospital (Denver, CO), and director of the antimicrobial stewardship program at NJH. He served on the Medical Advisory Group for the Governor's Expert Emergency Epidemic Response Committee (GEEERC) and is the infectious diseases lead for the NJH Center for Post-COVID Care and Recovery.

Jennifer R. Honda PhD was born and raised in Hawai'i. She received her B.S. from Colorado State University in Biology and Zoology, M.S. in Microbiology from the University of Hawai'i, and PhD in Microbiology from the University of Colorado Anschutz Medical Campus. Currently, Dr. Honda is basic science, translational mycobacteriologist and Assistant Professor for the Center for Genes, Environment, and Health, Department of Immunology and Genomic Research, and the NTM Center for Excellence at National Jewish Health. Her research program actively studies the 1) environmental- 2) host- 3) microbial factors that contribute to NTM pulmonary disease emergence globally. The Honda Lab consistently seeks to learn more about the environmental drivers of NTM, routinely cultures NTM from environmental and clinical samples, and utilizes these recovered isolates to explore the intra- and inter-NTM species differences that contribute to pathogenicity and host evasion. Active in the American Thoracic Society (ATS) Pulmonary Infections and Tuberculosis (PI-TB) Assembly since 2014, she is the recipient of an ATS Foundation award in Pulmonary Medicine, PI-TB's Rising Star in 2019, and PI-TB Top Junior Faculty in 2021. The European Respiratory Society distinguished Dr. Honda in 2020 as an Innovator in NTM Science and Medicine.

Gwen Huitt, MD, MS is a Professor of Medicine in the division of Mycobacterial and Respiratory Infections at National Jewish Health. She is also an Associate Professor of Medicine in the Infectious Disease Division at the University of Colorado Denver. Dr. Huitt is the Director of the Adult Infectious Disease Care Unit at National Jewish, and the course director of the NJH Patient Conference on Management of Nontuberculous Mycobacterial Infections held yearly at National Jewish Health. She has been a member of the faculty at National Jewish since 1993 and was the first recipient of the National Jewish Clinician of the Year award in 2001. Additionally, she was awarded the National Jewish Ambassador Award in 2010.

Dr. Huitt's clinical and research interests include mycobacterial infections (both nontuberculous mycobacteria and multi-drug/extensively resistant tuberculosis), bronchiectasis, adult cystic fibrosis, alpha-1-antitrypsin deficiency and the management of chronic sinopulmonary infections. She grew up in Greeley, Colorado and attended the University of Northern Colorado with a BA in Medical Technology in 1979. She then attended the University of Colorado Health Sciences Center, receiving an MS in Genetic Counseling in 1984. She completed medical school, residency in internal medicine, and fellowship in infectious disease at the University of Colorado Health Sciences Center.

Shannon Kasperbauer, MD (Program Co-Director) is an Associate Professor of Infectious Diseases at National Jewish Health and the University of Colorado Health Sciences Center. She is the director of education for the infectious disease division and manages the fellowship program. She has directed the Denver TB Course since 2007. Dr. Kasperbauer earned her medical degree at Wright State University School of Medicine in Dayton, OH. She completed her internship and residency in internal medicine at the University of Colorado, followed by her fellowship in infectious disease, also at the University of Colorado.

Dr. Kasperbauer has written many abstracts, has several publications, including book chapters and journal articles. She has given many presentations on infectious diseases, both nationally and internationally.

Dr. Kasperbauer's areas of interest include Chronic Respiratory Infections, General Infectious Diseases, Nontuberculous Mycobacterial Infections and Tuberculosis.

Reeti Khare, PhD, D(ABMM), is the Infectious Disease Laboratory Director at National Jewish Health. She earned her doctorate in Virology and Gene Therapy from the Mayo Clinic Graduate School. She completed a post-doctoral fellowship at the University of Washington, and returned to Mayo Clinic for a clinical microbiology fellowship, after which she became a diplomate of the American Board of Medical Microbiology. Prior to National Jewish Health, she served as the Director of Microbiology at Northwell Health in New York. She has written several chapters, a book titled "Guide to Clinical and Diagnostic Virology", and has co-authored numerous articles in peer-reviewed journals. In her free time, she likes to spend time with her family, read, and go biking.

Tilman L. Koelsch, MD is a cardiothoracic radiologist, and Assistant Professor of radiology at National Jewish Health and the University of Colorado Health Science Center. He is the radiology liaison to the infectious disease division at National Jewish Health. Dr. Koelsch earned his medical degree from the University of Nebraska Medical Center in Omaha, NE. He completed his residency at Maricopa Medical Center in Phoenix, AZ, and completed a cardiothoracic radiology fellowship at National Jewish Health and at the University of Colorado Health Sciences Center.

His professional interests include imaging of thoracic and extrathoracic infections, interstitial lung disease, CT dose reduction, and cardiovascular imaging.

Amy Leitman, JD is the Director of Policy & Research at NTM Info & Research, a nonprofit advocacy group for patients with pulmonary nontuberculous mycobacterial disease. The daughter of a patient with NTM lung disease, she has spent the last decade championing the voice of the patient.

In her role, Amy represents the interests and perspectives of patients, healthcare providers, researchers, industry, and other interested stakeholders, submits letters to legislators, regulators, and independent organizations seeking patient input, and speaks at multi-stakeholder meetings. She has presented original patient preference research and is a co-author of several papers on NTM lung disease. As NTMir's representative to the NTM Research Consortium, Amy has collaborated on patient-centered and epidemiologic research.

Prior to joining NTM Info & Research, Amy spent many years working in communications and marketing, including for an NBA team where she oversaw the revision and relaunch of their website as well as the development of gameday collateral materials, and a major community nonprofit organization that mobilized human and financial resources to strengthen local and international community social safety nets.

Amy is a member of the American Thoracic Society, the Infectious Diseases Society of America, the American College of Chest Physicians (CHEST), the American Society for Microbiology, the European Respiratory Society, and the Drug Information Association.

A native of Montreal, Canada, Amy grew up in Toronto before moving to Miami, Florida where she earned her Bachelor of Arts and Juris Doctor from the University of Miami.

Stacey L. Martiniano, MD, MSCS is an Associate Professor of Pediatrics at the University of Colorado and Children's Hospital Colorado and an Affiliate of National Jewish Health. She is a pediatric pulmonologist who focuses on lung infections, specifically, nontuberculous mycobacterial infections in children with cystic fibrosis.

As a national clinical expert and lead researcher, Dr. Martiniano serves as national principal investigator of two multicenter studies in NTM: The Prospective Evaluation of NTM Disease in Cystic Fibrosis (PREDICT Study) and The Prospective Algorithm for Treatment of NTM in Cystic Fibrosis (PATIENCE Study). Both are funded by the Cystic Fibrosis Foundation. She is also the co-investigator and director of the Clinical Research Core for the Cystic Fibrosis Foundation Colorado's CF NTM Research Development Program.

Her clinical and translational research has already confirmed the rate of the infection and established the feasibility of new clinical tools such as diagnostic algorithms. Over time, Dr. Martiniano seeks not only to improve outcomes for patients with NTM, but also to help clinicians and the broader cystic fibrosis community care for kids with cystic fibrosis and NTM.

Michael Strong, Ph.D. is an Associate Professor at National Jewish Health in the Center for Genes, Environment, and Health. Dr. Strong received his Ph.D. in Molecular Biology from the University of California, Los Angeles, and completed his postdoctoral research fellowship at Harvard Medical School prior to joining the faculty at National Jewish Health in 2010. Dr. Strong and his research group are interested in developing and applying computational and molecular methods to better generate, integrate, and analyze genomic information, with a focus on respiratory diseases, environmentally acquired infectious disease, and global and emerging pathogens including *Mycobacterium tuberculosis*, nontuberculous mycobacteria (NTM), and SARS-CoV-2. His lab's research on nontuberculous mycobacteria focuses on the genomic characterization and study of diverse species of NTM that can cause pulmonary, disseminated, and tissue infections. Projects of his lab include genomic sequencing and surveillance of NTM affecting the Cystic Fibrosis population and genomic analysis of clinical and environmental NTM. This research builds on the disciplines of microbiology, systems biology, genomics, computational biology, and structural informatics.

National Jewish Health

1400 Jackson Street
Denver, CO 80206

© 2021 National Jewish Health

Duplication of this material without
authorized permission is prohibited.

