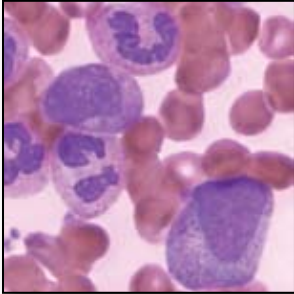


Advanced Diagnostic Laboratories

Phagocytic Cell Immune Deficiencies



The primary immunodeficiencies with the least definable presentations are the phagocytic disorders. Most neutrophil disorders result in increased susceptibility to staphylococcal infections, whereas most macrophage activation disorders result in increased susceptibility to atypical mycobacterial infections. In addition, patients with neutrophil disorders often are predisposed to fungal and unusual bacterial infections. Defects can be due to an insufficient number of phagocytic cells, inability of the cells to get to an infected area, or inability to kill ingested bacteria or fungi normally.

Common Phagocytic Cell Immune Defects

Disease	Common Name	ICD 9 Code
Leukocyte Adhesion Defect	LAD	288.9
Chronic Granulomatous Disease	CGD	288.1
Chediak Higashi Syndrome	CHS	288.2
Cyclic Neutropenia, Kostman Disease	Neutropenia	288.0

Second tier testing from ADx

Screening laboratory tests from Advanced Diagnostic Laboratories (ADx) can consist of initial complete and manual blood count, and oxidative burst (neutrophil dihydrorhodamine [DHR], neutrophil nitroblue tetrazolium [NBT] dye reduction) tests. A normal result from these tests does not exclude defects in the TLR or IFN γ /IL12 pathways.

	ADx Test Code
Chemotaxis assay	CTX1
CD11/CD18 adherence markers	ADHM
Toll-like receptor TLR ligand panel	Inquire
Neutrophil bactericidal assay	BACT1
IFN γ /IL12 axis	IL12R, IFNGR, inquire